

N32°W

1300.00 M Elev.

1200.00 M Elev.

1100.00 M Elev.

1000.00 M Elev.

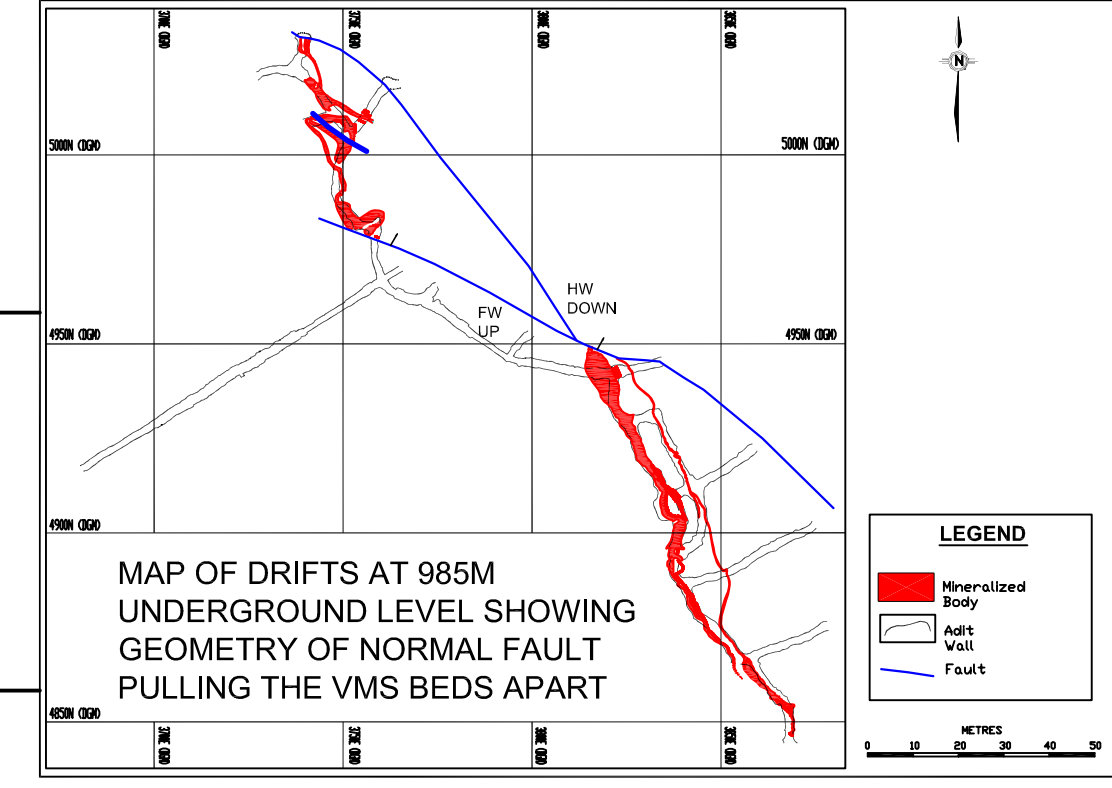
900.00 M Elev.

800.00 M Elev.

700.00 M Elev.

600.00 M Elev.

500.00 M Elev.



PROPOSED DRILLING

PROPOSED ADDITIONAL DRILLING

SUBPARALLEL NORMAL FAULT

DRIFTS (985 Mt)

DRIFTS (985 Mt)

LEGEND

- DRILL HOLE COLLAR
- MINERALIZED INTERSECTION IN DRILL HOLES AND DRIFTS
- ▨ EXTENT OF MINERALIZATION
- ▭ EXTENT OF EXPLORATION TILL DATE
- FAULT



PEBBLE CREEK MINING LTD.
ADI GOLD MINING PVT. LTD.

**LONGITUDINAL VERTICAL SECTION (N32°W)
SHOWING EXPLORED AND UNEXPLORED VMS BEDS**

Date : 20-Sep-07	Geology By : S. Chattopadhyay, S. Bose, and S. Banerjee
Prepared By: S. Banerjee	